

**Catamount®**

# **Catamount® General-Purpose Ties & Accessories**

**In this section...**



## **Catamount® General-Purpose Ties & Accessories**

---

Twist Tail® Cable Ties .....	C-62
General-Purpose Cable Ties and Accessories.....	C-63–C-66

**Thomas & Betts**

[www.tnb.com](http://www.tnb.com)

## Twist Tail® Cable Ties

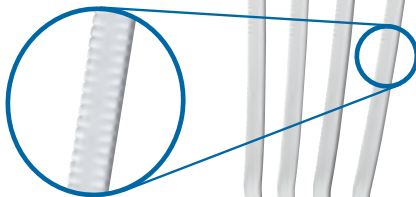
Tail twists right off — no tools needed!

### Catamount® Twist Tail® Cable Tie

**NEW!**

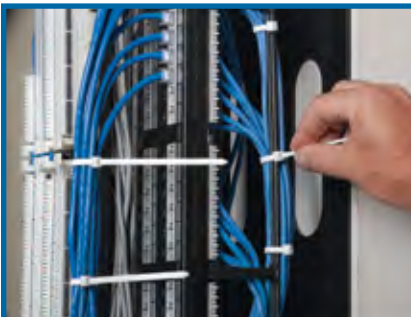


- Redesigned using impact-modified nylon to increase both flexibility and wearability
- Unique and improved design for quick, easy no-tool installation
- After installing, remove excess tail with a simple “bend, bend again and twist” motion
- Tail breaks off neat and clean — no sharp edges to damage hands or cables
- Ideal for limited-space installations where you can't fit a cut-off tool
- Suitable for light-duty cable tie applications



For fast and easy installation, you can't beat the Catamount® Twist Tail® Cable Tie. After you secure the Twist Tail® tie around a bundle of cables, simply grasp the excess tail between your thumb and forefinger, bend, bend in the other direction and twist. The tail breaks right off, leaving no sharp edges to scratch your hands or your cables. The Twist Tail® cable tie makes tail removal easy with its unique design but still provides a full 30 lbs. minimum loop tensile strength — perfect for any general-purpose cable tie application.

CAT. NO.	LENGTH (IN.)	WIDTH (IN.)	MIN. TENSILE STRENGTH (LBS.)	COLOR	STD. QTY.
TT-7-30-9-L	7	.187	30	Natural	50
TT-7-30-0-L	7	.187	30	UV Black	50
TT-11-30-9-L	11	.187	30	Natural	50
TT-11-30-0-L	11	.187	30	UV Black	50
TT-14-30-9-L	14	.187	30	Natural	50
TT-14-30-0-L	14	.187	30	UV Black	50



## General-Purpose Cable Ties and Accessories

Catamount® Ties fit the needs of general-purpose fastening. Installers quickly discover that Catamount® products offer durable and value-priced cable bundling for a variety of commercial and residential construction applications. Catamount® Ties are offered in a wide range of sizes, styles and colors and meet the requirements for most fastening projects. Catamount® Cable Ties are UL Recognized per File #E-4905.

### Miniature — Series 18

CAT. NO.	LENGTH (IN.)	WIDTH (IN.)	MAX. BUNDLE DIA. (IN.)	COLOR	STD. QTY.
L-4-18-9-C	4.0	.100	5/8	Natural	100
L-4-18-9-M	4.0	.100	5/8	Natural	1,000
L-4-18-0-C	4.0	.100	5/8	UV Black	100
L-4-18-0-M	4.0	.100	5/8	UV Black	1,000
L-6-18-9-M	6.4	.100	1 1/2	Natural	1,000
L-8-18-9-C	8.0	.100	2	Natural	100
L-8-18-9-M	8.0	.100	2	Natural	1,000
L-8-18-0-C	8.0	.100	2	UV Black	100
L-8-18-0-M	8.0	.100	2	UV Black	1,000



### Heavy-Duty

CAT. NO.	LENGTH (IN.)	WIDTH (IN.)	MAX. BUNDLE DIA. (IN.)	COLOR	STD. QTY.
<b>Series 120</b>					
L-8-120-0-C	8.0	.300	2	UV Black	100
L-11-120-9-C	11.1	.300	3	Natural	100
L-11-120-0-C	11.1	.300	3	UV Black	100
L-14-120-9-C	14.2	.300	4	Natural	100
L-14-120-0-C	14.2	.300	4	UV Black	100
L-18-120-9-L	18.0	.300	4 3/4	Natural	50
L-18-120-0-L	18.0	.300	4 3/4	UV Black	50
L-24-120-9-Q	24.2	.300	7	Natural	25
L-24-120-9-L	24.2	.300	7	Natural	50
L-24-120-0-Q	24.2	.300	7	UV Black	25
L-24-120-0-L	24.2	.300	7	UV Black	50
L-24-120-2-L	24.2	.300	7	Red	50
L-28-120-9-L	28.0	.300	8	Natural	50
L-28-120-0-L	28.0	.300	8	UV Black	50
<b>Series 175</b>					
L-24-175-9-L	24.0	.345	7.2	Natural	50
L-24-175-0-L	24.0	.345	7.2	UV Black	50
L-36-175-9-L	36.0	.345	10 3/4	Natural	50
L-36-175-0-L	36.0	.345	10 3/4	UV Black	50
L-48-175-9-L	48.0	.345	15	Natural	50
L-48-175-8-L	48.0	.345	15	Gray	50
L-48-175-0-L	48.0	.345	15	UV Black	50
<b>Series 250</b>					
L-28-250-0-L	28.0	.345	8	UV Black	50



### Intermediate — Series 30/40

CAT. NO.	LENGTH (IN.)	WIDTH (IN.)	MAX. BUNDLE DIA. (IN.)	COLOR	STD. QTY.
L-5-30-9-C	5.6	.130	1 1/4	Natural	100
L-5-30-9-M	5.6	.130	1 1/4	Natural	1,000
L-5-30-0-C	5.6	.130	1 1/4	UV Black	100
L-5-30-0-M	5.6	.130	1 1/4	UV Black	1,000
L-8-40-9-C	8.5	.140	2	Natural	100
L-8-40-9-M	8.5	.140	2	Natural	1,000
L-8-40-0-C	8.5	.140	2	UV Black	100
L-8-40-0-M	8.5	.140	2	UV Black	1,000
L-11-40-9-C	11.5	.146	3	Natural	100
L-11-40-9-M	11.5	.146	3	Natural	1,000
L-11-40-0-C	11.5	.146	3	UV Black	100
L-11-40-0-M	11.5	.146	3	UV Black	1,000
L-14-40-9-C	14.5	.146	4	Natural	100
L-14-40-9-M	14.5	.146	4	Natural	1,000
L-14-40-0-C	14.5	.146	4	UV Black	100
L-14-40-0-M	14.5	.146	4	UV Black	1,000



### Standard — Series 50

CAT. NO.	LENGTH (IN.)	WIDTH (IN.)	MAX. BUNDLE DIA. (IN.)	COLOR	STD. QTY.
L-7-50-9-C	7.5	.187	13/4	Natural	100
L-7-50-9-M	7.5	.187	13/4	Natural	1,000
L-7-50-0-C	7.5	.187	13/4	UV Black	100
L-7-50-0-M	7.5	.187	13/4	UV Black	1,000
L-11-50-9-C	11.1	.187	3	Natural	100
L-11-50-9-D	11.1	.187	3	Natural	500
L-11-50-0-C	11.1	.187	3	UV Black	100
L-11-50-0-D	11.1	.187	3	UV Black	500
L-14-50-9-C	14.1	.187	4	Natural	100
L-14-50-9-D	14.1	.187	4	Natural	500
L-14-50-0-C	14.1	.187	4	UV Black	100
L-14-50-0-D	14.1	.187	4	UV Black	500



← For installation tools, see pp. C-46-C-48.

**Sample Catalog Order**

Length    Style    Color  
L 4 18 R 9 C  
Tensile Strength    Quantity

4" Length, 18-lb. Tensile Strength, Releasable Tie, Natural Color, 100-Pack Quantity

Color

0 – Black (UV Resistant)
9 – Natural  
8 – Gray

Pack Quantity

L = 50
D = 500  
C = 100
M = 1,000

Style

R = Releasable
MH = Mounting Head

## General-Purpose Cable Ties and Accessories

### Catamount® Cable Tie Assortment Packages

- Natural nylon or black weather-resistant nylon
- Reusable jar
- Easily merchandised
- Great value



CAT. NO.	LENGTH (IN.)	WIDTH	MAX. BUNDLE (IN.)	TENSILE STRENGTH	MATERIAL	JAR QTY
90650-I	4	.100	5/8	18#	Natural Nylon	300
	7.5	.187	1 1/4	50#		300
	11.1	.187	3	50#		50
90650-IUV	4	.100	5/8	18#	Black Weather-Resistant Nylon	300
	7.5	.187	1 1/4	50#		300
	11.1	.187	3	50#		50

### Mounting Head Ties



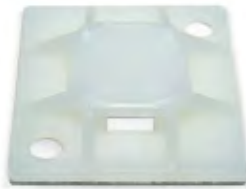
CAT. NO.	LENGTH (IN.)	WIDTH (IN.)	MAX BUNDLE DIA. (IN.)	MIN. LOOP TENSILE	MOUNTING HEAD SCREW SIZE	COLOR	STD. QTY.
L-7-50MH-9-C	7.5	.185	1 1/4	30	No. 10	Natural	100
L-7-50MH-9-M	7.5	.185	1 1/4	30	No. 10	Natural	1,000
L-7-50MH-0-C	7.5	.185	1 1/4	30	No. 10	UV Black	100
L-7-50MH-0-M	7.5	.185	1 1/4	30	No. 10	UV Black	1,000

## General-Purpose Cable Ties and Accessories

### Cable Tie Mounting Bases

- ¾" and 1" mounts for use with 18# through 50# tensile cable ties
- Supplied on rubber-based adhesive
- Available in 6.6 natural nylon and 6.6 black weather-resistant nylon
- UL94V-2 flammability (clip)

**Note:** See product expiration date on package. Periodically check product for adhesion and replace as needed. Product is for wire management only and is not intended for use as a primary support of wire, cable, etc.



CAT. NO.	MOUNT METHOD	COLOR	PKG. QTY.
<b>¾" x ¾" Sizes</b>			
MPNY-750-9-C	Synthetic Rubber Adhesive	Natural	100
MPNY-750-9-D	Synthetic Rubber Adhesive	UV Black	500
<b>1" x 1" Sizes</b>			
MPNY-1000-9-C	Synthetic Rubber Adhesive	Natural	100
MPNY-1000-0-C	Synthetic Rubber Adhesive	UV Black	100

For use with 18–50 lb. Cable Ties

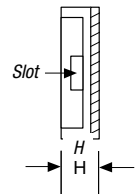
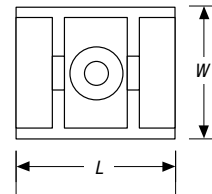
– Mounting Surface should be cleaned with alcohol based (IPA) cleaner before application

– Allow 15 minutes setup for maximum performance

## Accepts cable ties up to 50-lb. tensile strength!

### Adhesive Mounting Cradle

- Supplied on closed cell foam with synthetic rubber-based adhesive
- Use #6 self-tapping screw for added strength if desired



STD. PKG. CAT. NO.	BULK PKG. CAT. NO.	MATERIAL	H HEIGHT IN./MM	L LENGTH IN./MM	W WIDTH IN./MM	SLOT HEIGHT IN./MM	SLOT WIDTH IN./MM	MOUNT METHOD	STD. PKG. QTY.	BULK PKG. QTY.
MCNY-1250-9-C	MCNY-1250-9-D	Natural Nylon 6.6	.285/7.24	1.250/31.75	1.000/25.4	.090/2.29	.300/7.62	SRA Adhesive*	100	500

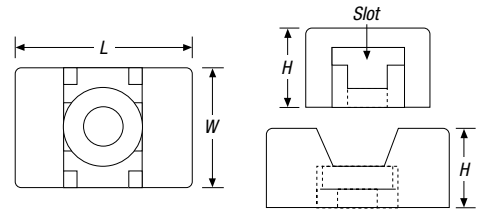
\*Synthetic Rubber Adhesive

**Note:** See product expiration date on package. Periodically check product for adhesion and replace as needed. Product is for wire management only and is not intended for use as a primary support of wire, cable, etc.

## General-Purpose Cable Ties and Accessories

### Two-Way Screw Mount

- SMNY-000 accepts 18 lb. (80N) tensile strength cable ties (miniature)
- SMNY-001 accepts up to 50 lb. (222N) tensile strength cable ties



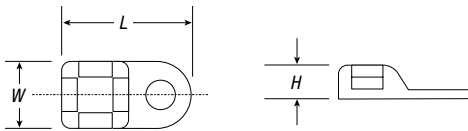
BULK PKG. CAT. NO.	MATERIAL	H HEIGHT IN./MM	L LENGTH IN./MM	W WIDTH IN./MM	SLOT HEIGHT IN./MM	SLOT WIDTH IN./MM	MOUNT METHOD	BULK PKG. QTY.
SMNY-000-9-D	Natural Nylon 6.6	.27/6.86	.57/14.48	.34/8.64	.07/1.78	.12/3.10	#4 Screw	500
SMNY-001-9-D	Natural Nylon 6.6	.25/7.11	.60/15.24	.38/9.77	.06/1.52	.20/5.68	#6 or #8 screw	500

*SMNY series for use in temperatures ranging from -40° F to 221° F (-40° C to 105° C).*

### Four-way screw mount for cable ties up to 50-lb. (222N) tensile strength!

#### Four-Way Mount

- Mount with #6 or #8 screws
- Available in 6.6 natural nylon



BULK PKG. CAT. NO.	H IN./MM	L IN./MM	W IN./MM	SLOT W IN./MM	MOUNT SCREW	BULK PKG. QTY.
SMNY-220-9-D	.23/5.84	.95/25.13	.50/12.70	.22/5.59	#6, #8	500

• Natural nylon color.  
For use in temperatures ranging from -40° F to 185° F (-40° C to 85° C).

### STRONG — up to 50-lb. tensile strength!

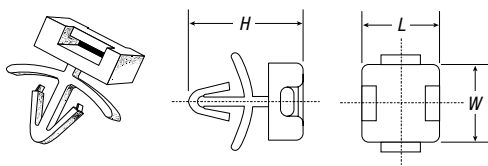
#### Push Mounts

##### PMNY-185

- Versatile push mount for cable ties to 50-lb. tensile strength
- For use in .187"/.192" mounting hole for panel thickness .030" to .080"

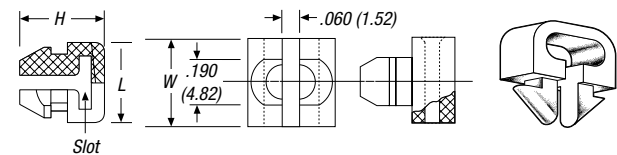
##### PMNY-245

- Accepts cable ties to 50-lb. tensile (miniature through standard)
- For use in .250" mounting hole for maximum panel thickness of .062"



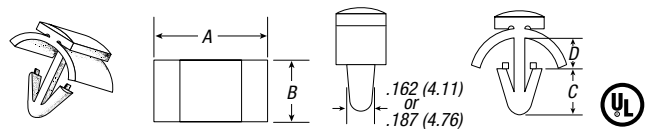
BULK PKG. CAT. NO.	MATERIAL	H HEIGHT IN./MM	L LENGTH IN./MM	W WIDTH IN./MM	SLOT HEIGHT IN./MM	BULK PKG. QTY.
PMNY-185-9-D	Nylon	.64/16.26	.43/10.92	.07/1.65	.07/1.65	500
PMNY-254-9-C	Nylon	.36/9.02	.32/8.13	.05/1.27	.22/5.59	100
PMNY-245-9-D	Nylon	.36/9.02	.32/8.13	.05/1.27	.22/5.59	500

• Natural nylon color.  
For use in temperatures ranging from -40° F to 185° F (-40° C to 85° C).



#### Snap Mounts

- For panel thicknesses from .060" to .150" to hold separate pieces of material together
- For MSNY-166-0-M used with W4 or N4 Series Cable Clamps, allowable panel thickness is .030" to .050"
- For MSNY-187-0-M used with W6 or N6 Series Cable Clamps, allowable panel thickness is .030" to .050"



CAT. NO.	MATERIAL	A IN./MM	B IN./MM	C IN./MM	D IN./MM	BULK PKG. QTY.
MSNY-166-0-M	UV Black Nylon	.49/12.45	.31/7.87	.28/7.11	.18/4.57	1,000
MSNY-187-0-M	UV Black Nylon	.625/15.87	.343/8.73	.281/7.14	.210/5.33	1,000